

Ice Vending Machine

Specifications

Physical

Dimensions H (171 1/4 in.) x W (100 in.) x D (288 in.)

5200SM Ice Maker

Power

Requirement 85A @ 208-240/60/3 (138A w/ 2nd ice maker)

Consumption 216 KWH per 4500 lbs. ¹

Water

Consumption 542 Gal. per 4500 lbs. ¹

Capacity

Ice Storage 375-16lb. bags

Ice Production ² 280-16lb. bags (560 w/ 2nd ice maker) ¹

¹ 100° air / 70° water
² 24 hours

1000SM Ice Maker

Power

Requirement 98A @ 208-240/60/3 (165A w/ 2nd ice maker)

Consumption 300 KWH per 6500 lbs. ¹

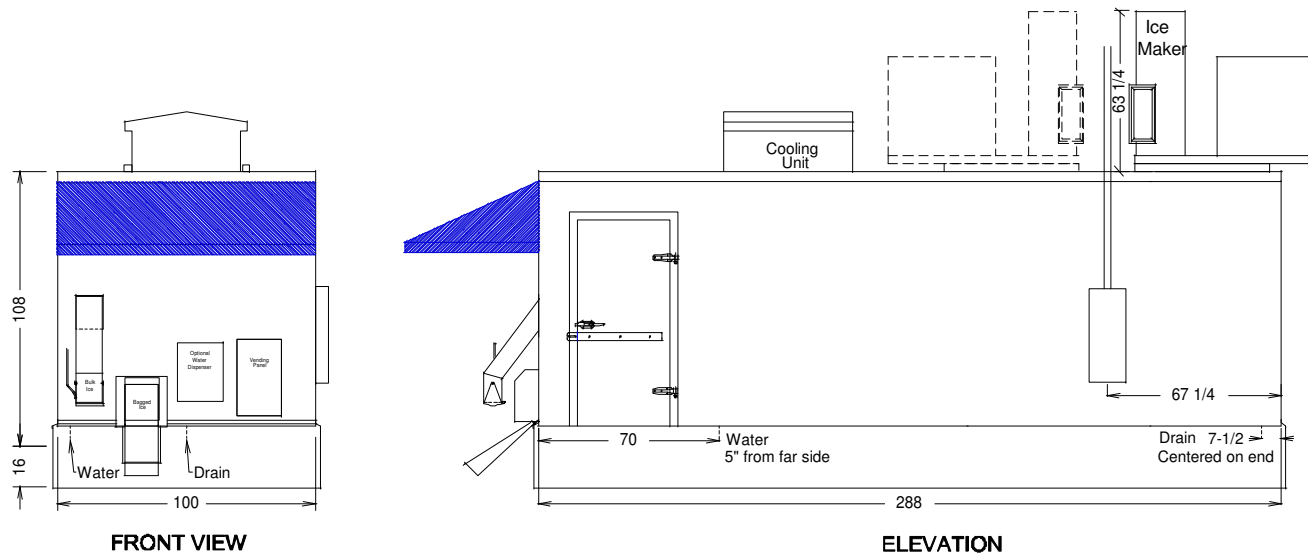
Water

Consumption 783 Gal. per 6500 lbs. ¹

Capacity

Ice Storage 375-16lb. bags

Ice Production ² 400-16lb. bags (800 w/ 2nd ice maker) ¹



ICE HOUSE AMERICA®

Copyright © 2008 Ice House America, LLC